

FRESHDIRTT

RETAIL | ATHENS, OH

ISSUE #309

[CLICK TO VIEW PROJECT GALLERY](#) 



ABOUT THE PROJECT

How does a university expand its technology depot retail area when the new space includes the challenge of curved walls, varying ceiling heights and the need for custom graphics? They turn to DIRTT to do what conventional construction can't. Curving glass walls and anodized aluminum create a bright, sweeping display area and make the most of this space in the student union atrium.

SOLUTIONS

- Angle Walls
- Glass Clerestory
- Glass Walls
- Solid Walls

FINISHES

- Anodized Aluminum
- Chromacoat
- Clear Tempered Glass

DESIGN

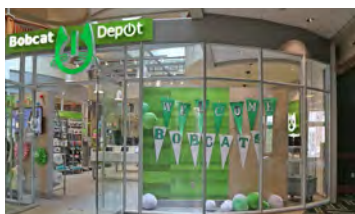
FRCH

DISTRIBUTION PARTNER

Continental Office Environments



DIRTT stepped up to the challenge of providing curved walls, varying ceiling heights and custom graphics that complemented the existing space.



[CLICK HERE FOR MORE INFORMATION ON FRESHDIRTT OR GO TO DIRTT.NET](#)

DIRTT
Build better.™